



GLENWOOD ESTATE

cozy living comes naturally

House overview

Unit IC-04

House type B'

P+1E+M

4 rooms

2 bathrooms

1 toilet

Total net area
202.9 m²

Gross built area
263.4 m²

Private garden
172.0 m²

Plot size
352.0m²

Developed by
SPEDWELL



DISCLAIMER: this material does not represent an offer or a contract and is for informational purposes. Due to the changes that may occur during the construction, the surfaces can be modified without prior notification, but in full accordance with any contract signed.



GLENWOOD ESTATE

cozy living comes naturally

House overview

Unit IC-04

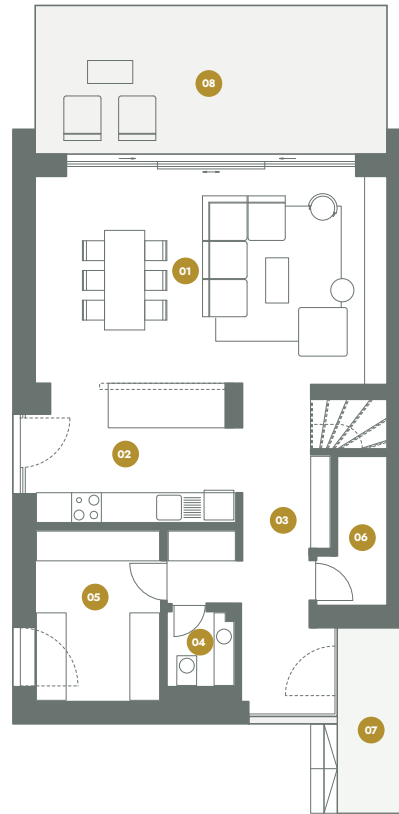
House type B'

P+1E+M

4 rooms

2 bathrooms

1 toilet



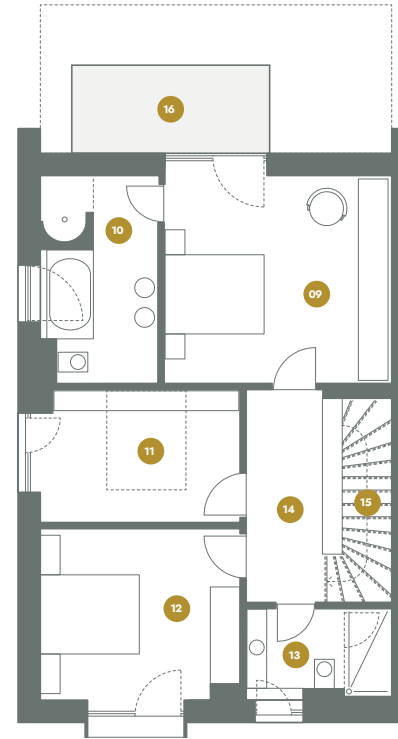
Ground Floor

01 Living Room	30.4 m ²
02 Kitchen	11.2 m ²
03 Hall	12.8 m ²
04 Toilet	2.1 m ²
05 Technical/Storage	8.6 m ²
06 Storage	3.4 m ²

Total interior 68.5 m²

07 Outdoor terrace	5.3 m ²
08 Outdoor terrace	22.2 m ²

Total (including terrace) 96.0 m²



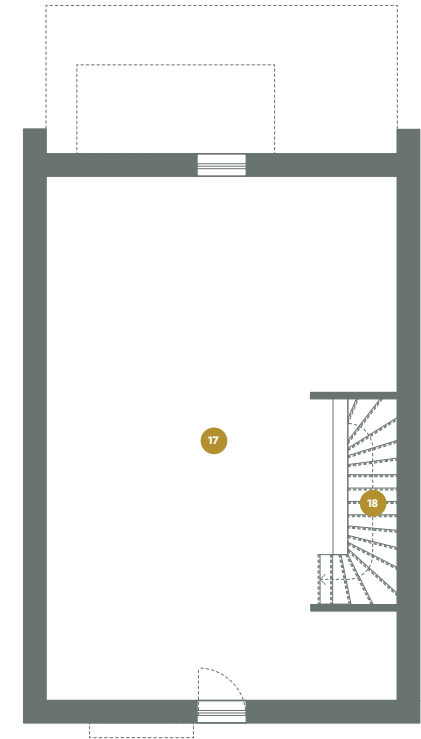
First Floor

09 Master Bedroom	19.7 m ²
10 On Suite Bathroom	9.6 m ²
11 Dressing	10.6 m ²
12 Bedroom	14.1 m ²
13 Bathroom	4.9 m ²
14 Hall	8.0 m ²
15 Stair	4.4 m ²

Total interior 71.3 m²

16 Terrace	7.0 m ²
------------	--------------------

Total (including terrace) 78.3 m²



Attic

17 Loft / Attic	58.7 m ²
18 Stair	4.4 m ²

Total interior 63.1 m²